

Dalkeith Grove, Stanmore, Greater London. HA7 4SQ

MELVIN JACOBS
020 8381 2908



- 4 bedrooms
- 3 bathrooms
- 37ft Lounge / Glass conservatory
- Dining Room
- Luxury Fitted Kitchen
- 2 Outside Balconies
- Stunning Garden
- Carriage Driveway
- Prime Location close to North London Collegiate School
- View Now!

£1,699,999
Subject To Contract



MELVIN JACOBS ESTATE AGENTS
Sales, Lettings & Block Management

45/47 Manor Park Crescent, Edgware, Middlesex, HA8 7LY
Tel 020 8381 2908 www.melvinjacobs.com

MELVIN JACOBS
020 8381 2908



**MELVIN
JACOBS**



Entrance

Lounge (37' 0" x 12' 09") or (11.28m x 3.89m)

Kitchen (19' 0" x 12' 0") or (5.79m x 3.66m)

Dining Room (16' 06" x 11' 02") or (5.03m x 3.40m)

Utility Room

Downstairs Shower room/ WC

Bathroom

Bedroom 1 (15' 0" x 10' 0") or (4.57m x 3.05m)

En Suite

Bedroom 2 (17' 0" x 13' 0") or (5.18m x 3.96m)

Bedroom 3 (14' 08" x 11' 08") or (4.47m x 3.56m)

Balcony (12' 08" x 11' 0") or (3.86m x 3.35m)

Bedroom 4 (11' 06" x 10' 0") or (3.51m x 3.05m)

Balcony (13' 06" x 11' 0") or (4.11m x 3.35m)

GARDEN (80' 0" x 51' 0") or (24.38m x 15.54m)

TERMS

Tenure

We are informed that the tenure is Freehold

Council Tax

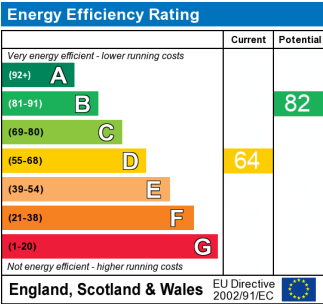
Council tax band: G

Viewing

Strictly By Appointment Only. Melvin Jacobs, 020 8381 2908

Melvin Jacobs Estate Agents
45 - 47 Manor Park Crescent,
Edgware,
Middlesex,
HA8 7LY

e: info@melvinjacobs.com



The energy efficiency rating is a measure of the overall efficiency of a home. The higher the rating the more energy efficient the home is and the lower the fuel bills will be.

Dalkeith Grove, Stanmore, HA7 4SQ

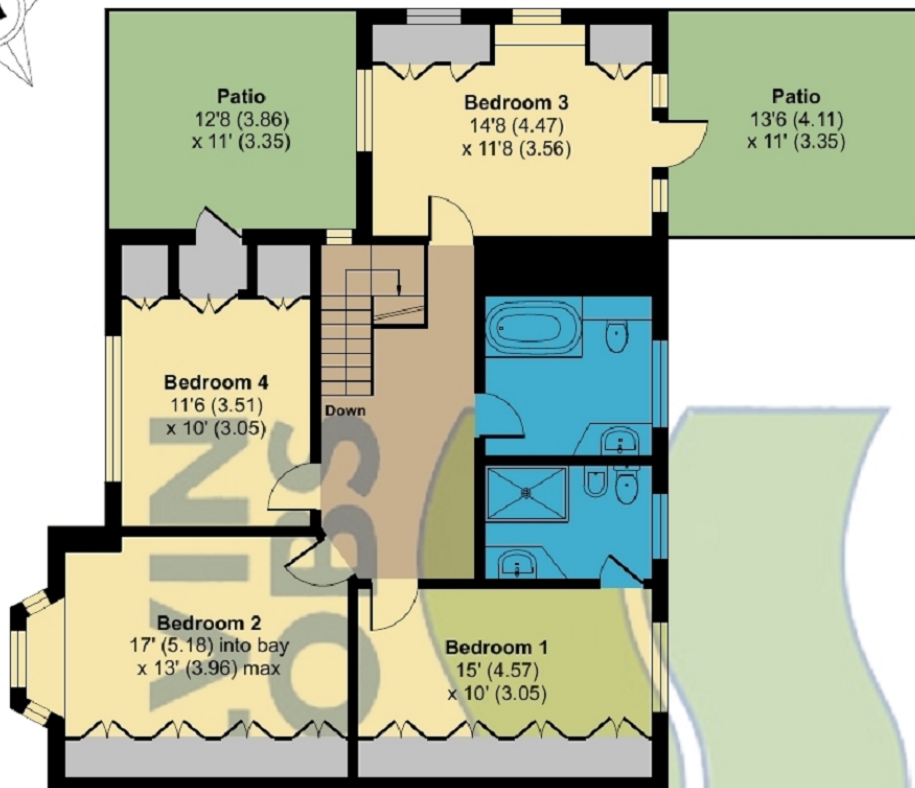
Approximate Area = 2249 sq ft / 208.9 sq m

Outbuilding = 105 sq ft / 9.7 sq m

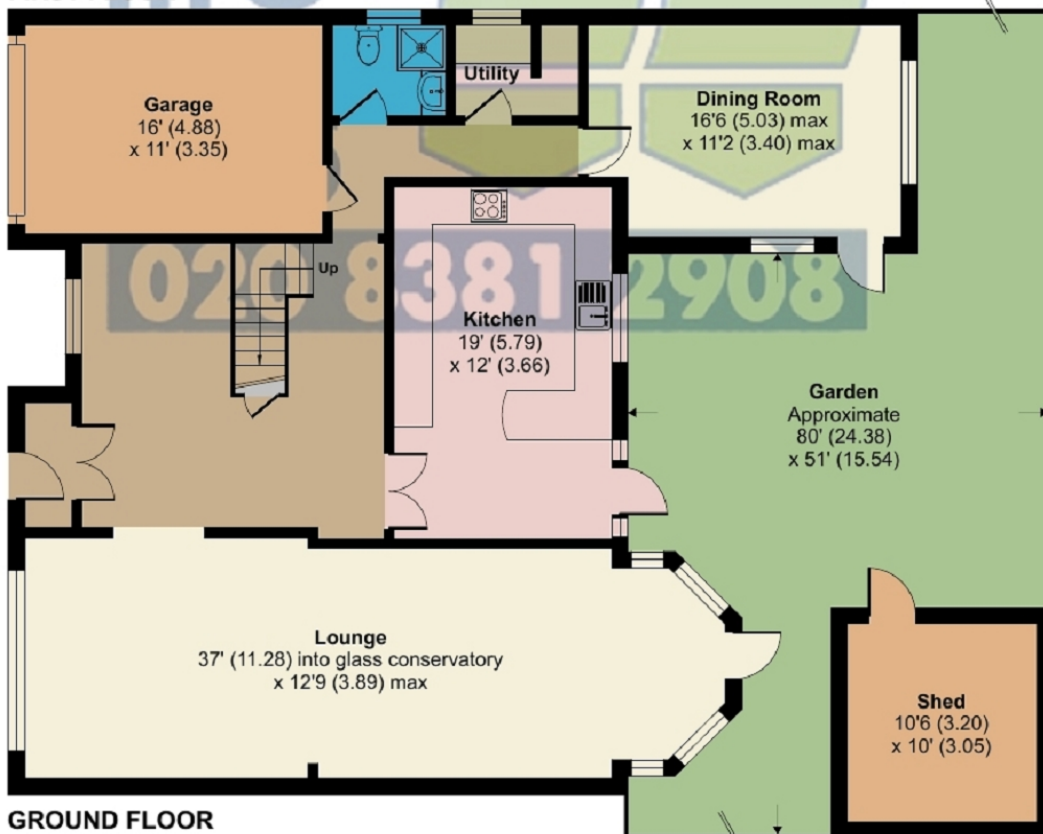
Garage = 173 sq ft / 16 sq m

Total = 2527 sq ft / 234.6 sq m

For identification only - Not to scale



FIRST FLOOR



GROUND FLOOR



Floor plan produced in accordance with RICS Property Measurement Standards incorporating International Property Measurement Standards (IPMS2 Residential). © nichecom 2023. Produced for Melvin Jacobs Estate Agents. REF: 1015501