

Kenilworth Road, Edgware, Greater London. HA8 8XB



- Detached Property
- 3 Bedroom
- 1 Bathrooms
- Driveway for 2-3 Cars
- Excellent Location
- Close to Shops, Schools and Places of Worship

£739,950
Subject To Contract



MELVIN JACOBS ESTATE AGENTS
Sales, Lettings & Block Management

45/47 Manor Park Crescent, Edgware, Middlesex, HA8 7LY
Tel 020 8381 2908 www.melvinjacobs.com





**MELVIN
JACOBS**



**MELVIN
JACOBS**
020 8381 2908

These particulars are prepared with all due care and attention for the convenience of intending purchasers but their accuracy is not guaranteed and they do not form any part of a contract. Purchasers must themselves check by inspection or otherwise the accuracy of these particulars prior to signing a contract.

Bedroom 1 (18' 0" x 10' 10") or (5.49m x 3.30m)

Bedroom 2 (11' 6" x 7' 11") or (3.51m x 2.41m)

Bedroom 3 (11' 7" x 9' 4") or (3.53m x 2.84m)

Lounge (22' 2" x 18' 0") or (6.76m x 5.49m)

GARDEN (39' 8" x 37' 2") or (12.09m x 11.33m)

Kitchen (11' 8" x 8' 5") or (3.56m x 2.57m)

Utility Room (10' 5" x 5' 3") or (3.18m x 1.60m)

Office (15' 1" x 8' 3") or (4.60m x 2.51m)

Tenure

We are informed that the tenure is Freehold

Council Tax

Council tax band: F


Viewing

Strictly By Appointment Only. Melvin Jacobs, 020 8381 2908

Melvin Jacobs Estate Agents

45 - 47 Manor Park Crescent,
Edgware,
Middlesex,
HA8 7LY

e: info@melvinjacobs.com

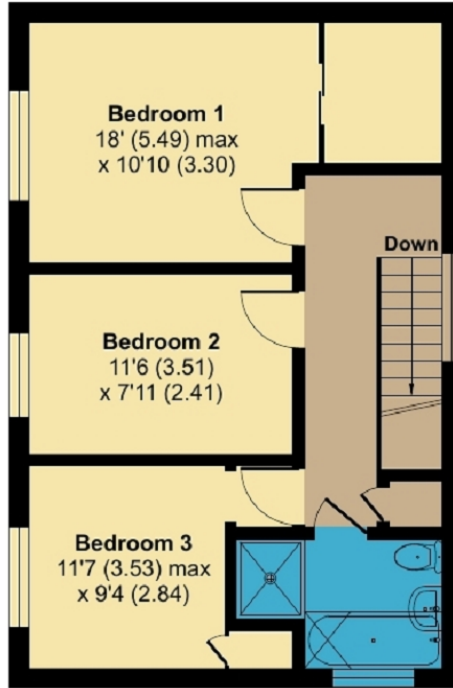
Energy Efficiency Rating		Current	Potential
<i>Very energy efficient - lower running costs</i>			
(92+)	A		
(81-91)	B		
(69-80)	C		80
(55-68)	D	60	
(39-54)	E		
(21-38)	F		
(1-20)	G		
<i>Not energy efficient - higher running costs</i>			
England, Scotland & Wales		EU Directive 2002/91/EC	

The energy efficiency rating is a measure of the overall efficiency of a home. The higher the rating the more energy efficient the home is and the lower the fuel bills will be.

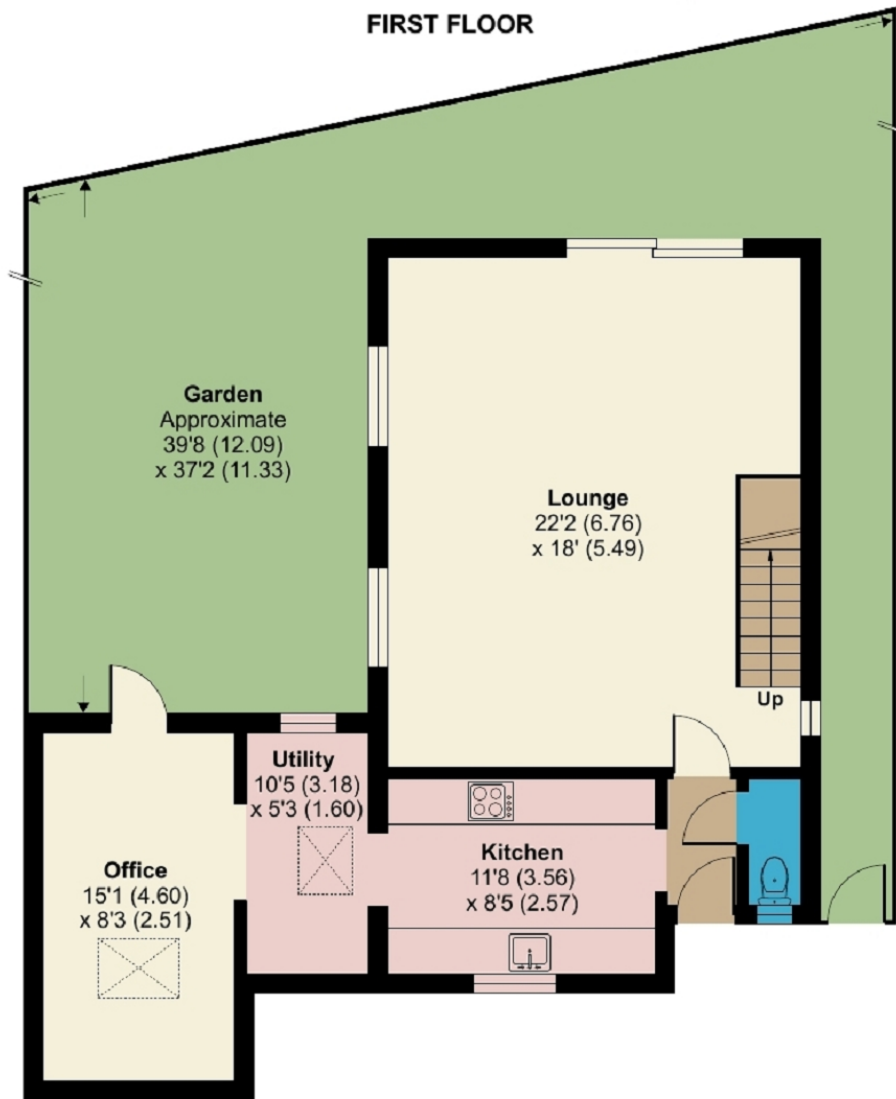
Kenilworth Road, Edgware, HA8 8XB

Approximate Area = 1245 sq ft / 115.6 sq m

For identification only - Not to scale



FIRST FLOOR



GROUND FLOOR



Floor plan produced in accordance with RICS Property Measurement Standards incorporating International Property Measurement Standards (IPMS2 Residential). © nichecom 2024. Produced for Melvin Jacobs Estate Agents. REF: 1084007