

Garden City, Edgware, Greater London. HA8 7NQ



- In the Heart of the Town Centre
- Minutes from Edgware Station
- Mid Terrace Freehold Cottage
- Newly Fitted Modern Kitchen
- New Electric Fuse Box & Wiring
- 2 Good size Double Bedrooms
- New Modern Bathroom / WC
- Double Glazing Throughout
- Chain Free

Offers In Excess Of
£500,000
Subject To Contract



MELVIN JACOBS ESTATE AGENTS
Sales, Lettings & Block Management

45/47 Manor Park Crescent, Edgware, Middlesex, HA8 7LY
Tel 020 8381 2908 www.melvinjacobs.com

**MELVIN
JACOBS**
020 8381 2908



**MELVIN
JACOBS**



These particulars are prepared with all due care and attention for the convenience of intending purchasers but their accuracy is not guaranteed and they do not form any part of a contract. Purchasers must themselves check by inspection or otherwise the accuracy of these particulars prior to signing a contract.

Lounge (10' 11" x 18' 4") or (3.34m x 5.59m)

Kitchen/Dining Area (15' 1" x 8' 10") or (4.61m x 2.70m)

Bedroom 1 (11' 11" x 10' 10") or (3.62m x 3.29m)

Bedroom 2 (12' 5" x 7' 6") or (3.78m x 2.28m)

Bathroom and WC

GARDEN (30' 4" x 16' 1") or (9.24m x 4.90m)

Shed (6' 11" x 3' 9") or (2.11m x 1.15m)

Tenure

We are informed that the tenure is Freehold

Council Tax

Council tax band: D


Viewing

Strictly By Appointment Only. Melvin Jacobs, 020 8381 2908

Melvin Jacobs Estate Agents

45 - 47 Manor Park Crescent,
Edgware,
Middlesex,
HA8 7LY

e: info@melvinjacobs.com

Energy Efficiency Rating		Current	Potential
<i>Very energy efficient - lower running costs</i>			
(92+)	A		
(81-91)	B		89
(69-80)	C	72	
(55-68)	D		
(39-54)	E		
(21-38)	F		
(1-20)	G		
<i>Not energy efficient - higher running costs</i>			
England, Scotland & Wales		EU Directive 2002/91/EC	

The energy efficiency rating is a measure of the overall efficiency of a home. The higher the rating the more energy efficient the home is and the lower the fuel bills will be.

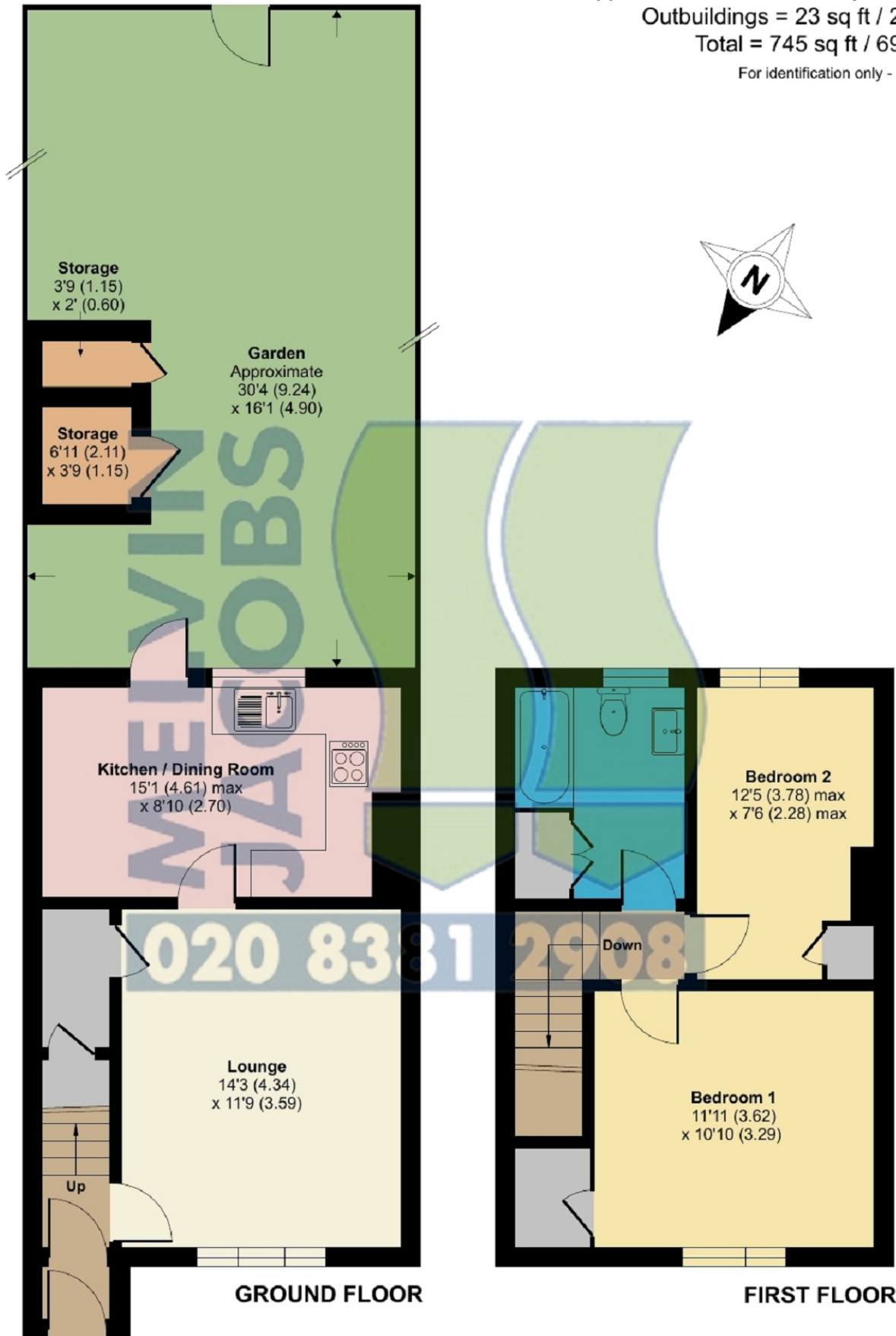
Garden City, Edgware, HA8 7NQ

Approximate Area = 722 sq ft / 67 sq m

Outbuildings = 23 sq ft / 2.1 sq m

Total = 745 sq ft / 69.1 sq m

For identification only - Not to scale



GROUND FLOOR

FIRST FLOOR

