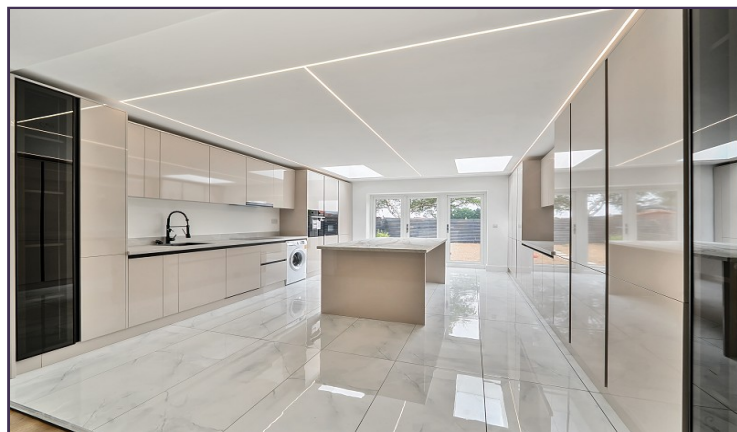


Bullhead Road, Borehamwood, Hertfordshire. WD6 1RJ



- 5 Bedrooms
- 3 Bathrooms (2 En-Suite)
- Renovated Throughout
- Chain Free
- Large New Kitchen
- New Modern Bathrooms
- Downstairs Guest WC
- Great Location

£699,950
Subject To Contract



MELVIN JACOBS ESTATE AGENTS
Sales, Lettings & Block Management

45/47 Manor Park Crescent, Edgware, Middlesex, HA8 7LY
Tel 020 8381 2908 www.melvinjacobs.com

**MELVIN
JACOBS**
020 8381 2908



**MELVIN
JACOBS**



These particulars are prepared with all due care and attention for the convenience of intending purchasers but their accuracy is not guaranteed and they do not form any part of a contract. Purchasers must themselves check by inspection or otherwise the accuracy of these particulars prior to signing a contract.

Entrance Hall

Lounge (11' 10" x 10' 5") or (3.61m x 3.18m)

Kitchen/Breakfast Room/Family Room (27' 4" x 15' 3")
or (8.32m x 4.66m)

Master Suite & Bathroom (14' 11" x 14' 3") or (4.54m x 4.35m)

Bedroom 2 (15' 0" x 10' 2") or (4.57m x 3.11m)

Bedroom 3 (12' 0" x 10' 3") or (3.67m x 3.13m)

Bedroom 4 (11' 11" x 7' 6") or (3.63m x 2.29m)

Bedroom 5 (6' 7" x 5' 11") or (2.01m x 1.81m)

GARDEN (35' 10" x 22' 3") or (10.93m x 6.77m)

Tenure

We are informed that the tenure is Freehold

Council Tax

Council tax band: D


Viewing

Strictly By Appointment Only. Melvin Jacobs, 020 8381 2908

Melvin Jacobs Estate Agents

45 - 47 Manor Park Crescent,
Edgware,
Middlesex,
HA8 7LY

e: info@melvinjacobs.com

Energy Efficiency Rating		Current	Potential
<i>Very energy efficient - lower running costs</i>			
(92+)	A		
(81-91)	B		
(69-80)	C	72	76
(55-68)	D		
(39-54)	E		
(21-38)	F		
(1-20)	G		
<i>Not energy efficient - higher running costs</i>			
England, Scotland & Wales		EU Directive 2002/91/EC	

The energy efficiency rating is a measure of the overall efficiency of a home. The higher the rating the more energy efficient the home is and the lower the fuel bills will be.

Bullhead Road, Borehamwood, WD6 1RJ

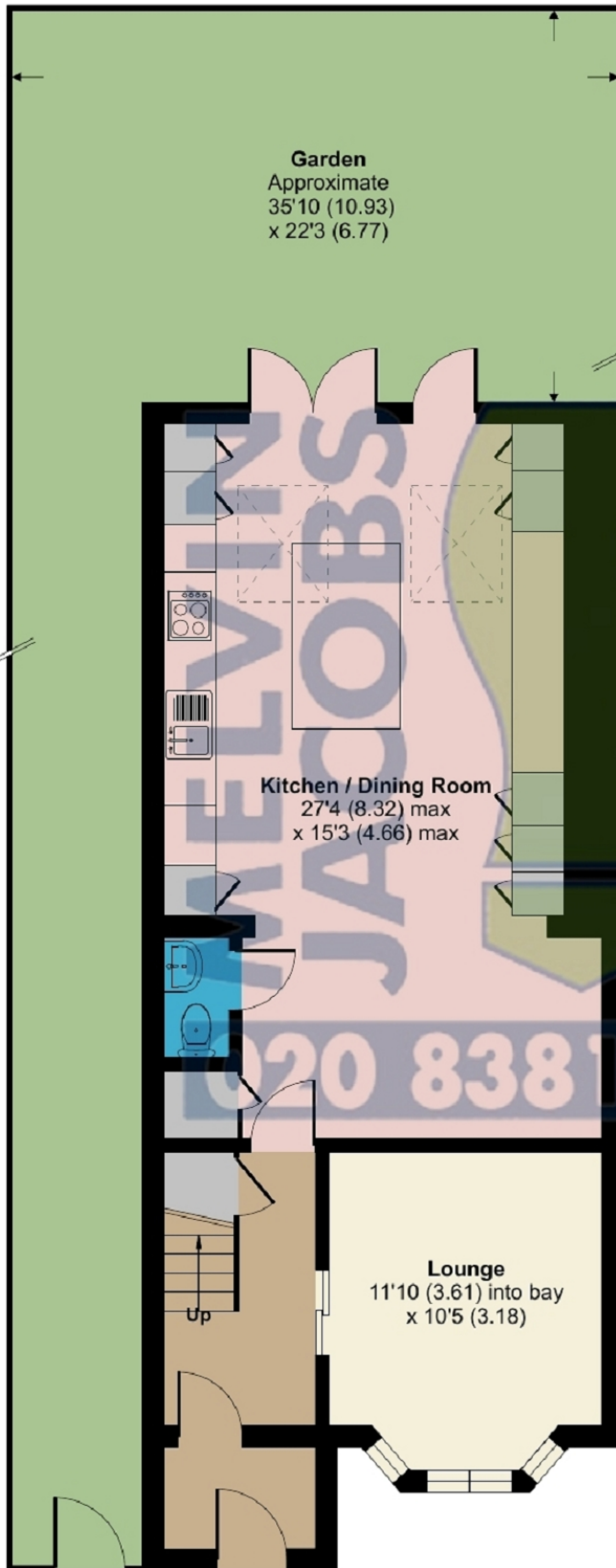


Approximate Area = 1299 sq ft / 120.6 sq m

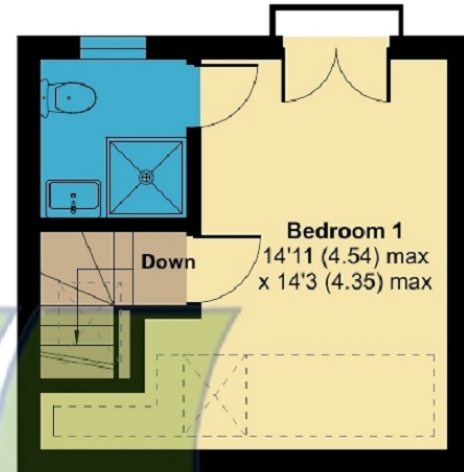
Limited Use Area(s) = 44 sq ft / 4 sq m

Total = 1343 sq ft / 124.6 sq m

For identification only - Not to scale



GROUND FLOOR



SECOND FLOOR



FIRST FLOOR

