

Bullhead Road, Borehamwood, Hertfordshire. WD6 1RJ



- 4 Bedrooms
- 2 En Suite Shower Rooms
- 1 Family Shower Room
- Renovated Throughout
- Large Modern Kitchen with Island
- Chain Free
- Downstairs Guest WC
- Great Location
- Turnkey Condition

£649,000
Subject To Contract



MELVIN JACOBS ESTATE AGENTS
Sales, Lettings & Block Management

45/47 Manor Park Crescent, Edgware, Middlesex, HA8 7LY
Tel 020 8381 2908 www.melvinjacobs.com

**MELVIN
JACOBS**
020 8381 2908



**MELVIN
JACOBS**



These particulars are prepared with all due care and attention for the convenience of intending purchasers but their accuracy is not guaranteed and they do not form any part of a contract. Purchasers must themselves check by inspection or otherwise the accuracy of these particulars prior to signing a contract.

Entrance Hall

Lounge (11' 10" x 10' 5") or (3.61m x 3.18m)

Kitchen/Breakfast Room (27' 4" x 15' 3") or (8.32m x 4.66m)

Bedroom 1 (10' 0" x 16' 0") or (3.04m x 4.87m)

En-suite shower room

Bedroom 2 (14' 11" x 14' 3") or (4.54m x 4.35m)

En-suite shower room

Bedroom 3 (12' 0" x 10' 3") or (3.67m x 3.13m)

Bedroom 4 (6' 7" x 5' 11") or (2.01m x 1.81m)

Family Shower Room

GARDEN

Tenure

We are informed that the tenure is Freehold

Council Tax

Council tax band: D


Viewing

Strictly By Appointment Only. Melvin Jacobs, 020 8381 2908

Melvin Jacobs Estate Agents

45 - 47 Manor Park Crescent,
Edgware,
Middlesex,
HA8 7LY

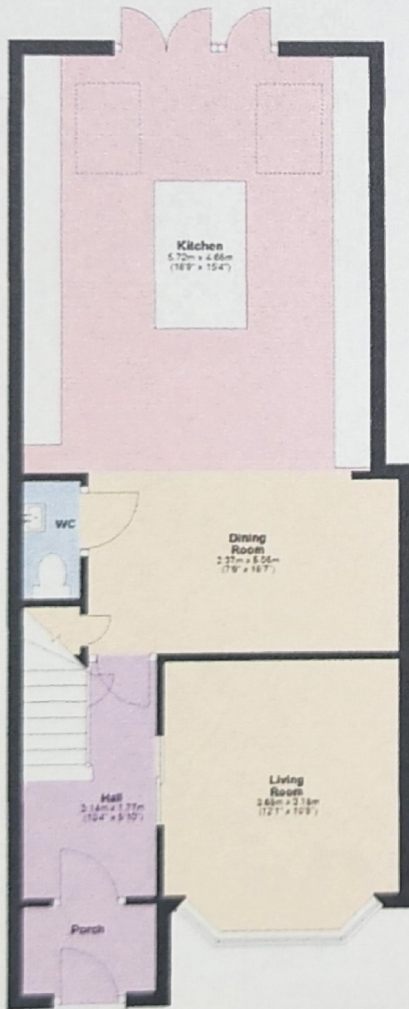
e: info@melvinjacobs.com

Energy Efficiency Rating		Current	Potential
<i>Very energy efficient - lower running costs</i>			
(92+)	A		
(81-91)	B		
(69-80)	C	72	76
(55-68)	D		
(39-54)	E		
(21-38)	F		
(1-20)	G		
<i>Not energy efficient - higher running costs</i>			
England, Scotland & Wales		EU Directive 2002/91/EC	

The energy efficiency rating is a measure of the overall efficiency of a home. The higher the rating the more energy efficient the home is and the lower the fuel bills will be.

Ground Floor

Approx. 58.2 sq. metres (626.7 sq. feet)



First Floor

Approx. 42.0 sq. metres (452.6 sq. feet)



Second Floor

Approx. 19.1 sq. metres (205.1 sq. feet)



Total area: approx. 119.3 sq. metres (1284.4 sq. feet)